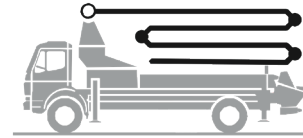


Truck-mounted concrete pump

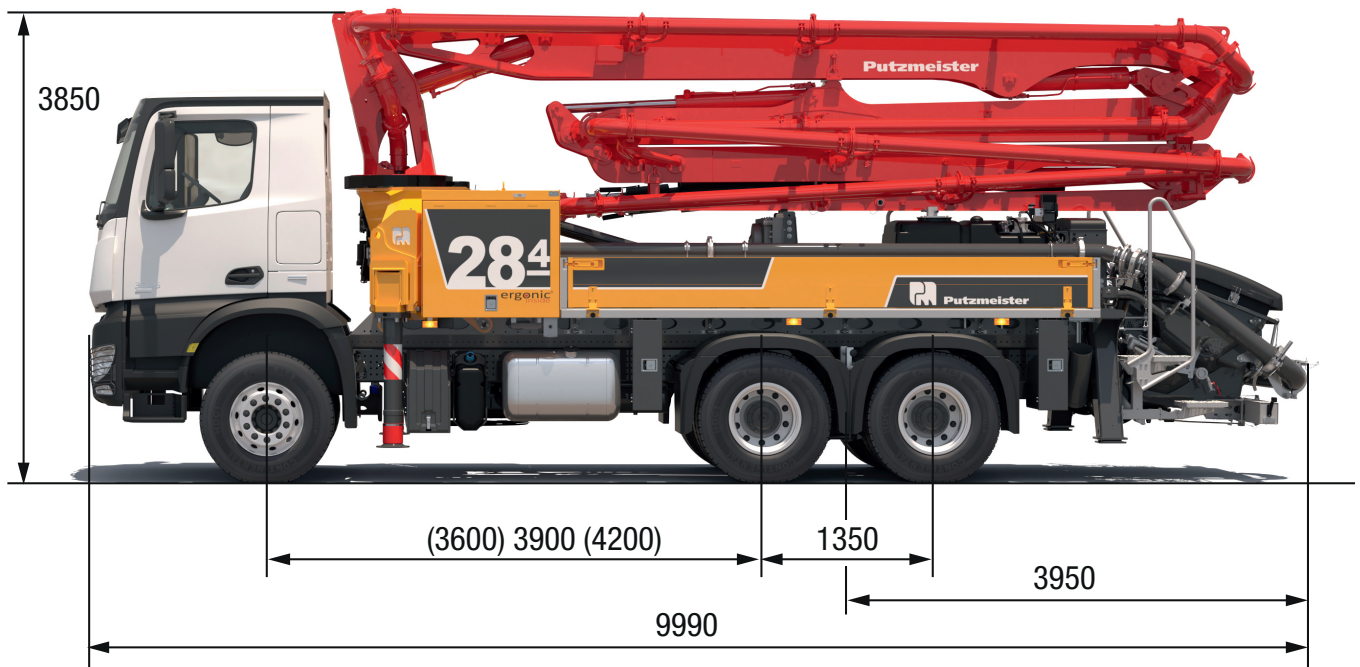
BSF 28-4.11 H

Output up to 160 m³/h
 Delivery pressure up to 130 bar*



.16 H
 .15 i LS

ergonic[®]
 inside 3



Note: Standard version. Dimensions and weights depend on truck, pump model and equipment.
 Dimensions in mm. Example based on Mercedes Benz Arocs 2636 with a 15 i LS core pump.
 For illustration only.

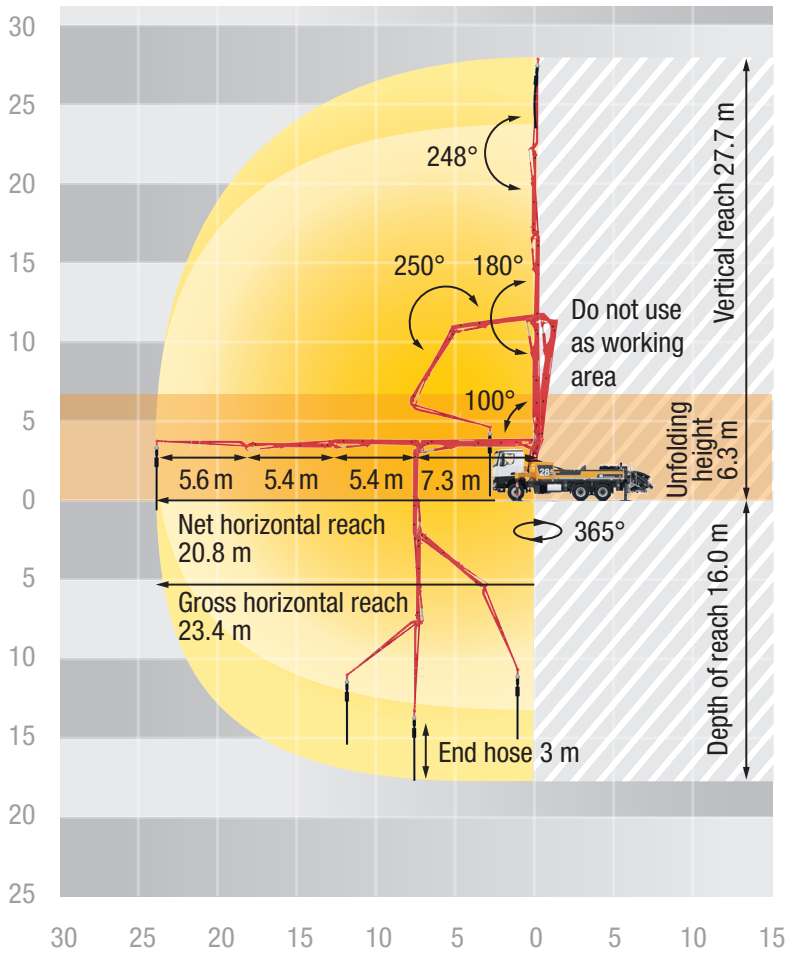
Technical data

Boom M 28-4		
Sections		4
Reach height	m	27.7
Horizontal reach	gross	m 23.4
	net	m 20.8
Reach depth max.	m	16.0
Unfolding height	m	6.3
End hose length	m	3
Folding system		Z
Delivery line		DN 125

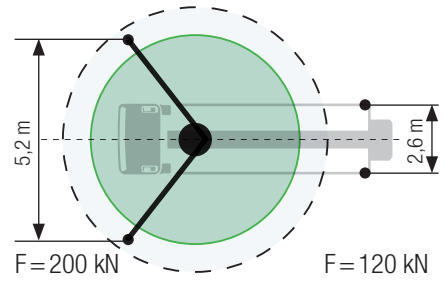
Pump		BSF	.11 H	.16 H	.15 i LS *
Rod side	Output	m ³ /h	-	160	-
	Delivery pressure	bar	-	85	-
	Strokes	1/min.	-	31	-
Piston side	Output	m ³ /h	110	108	150
	Delivery pressure	bar	78	130	85
	Strokes	1/min.	32	21	24
	Delivery cylinder	Ø mm	230	230	250
	Stroke	mm	1400	2100	2100

Delivery line boom max. 85 bar. All data maximum theoretical.
 * for CE markets only

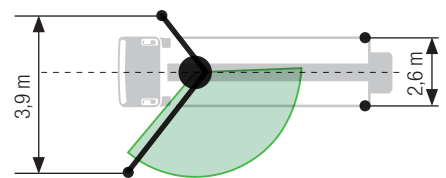
Reach information diagram, Support



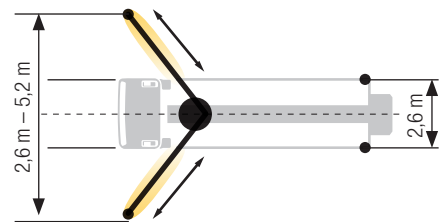
Standard – Full support



OSS** – One-side support



iSC* – Full-flexible support



Dimensions can differ depending on configuration.
Support width based on center of support leg.
Diameter of swivel plate 270 mm.

** for non-CE markets only

* for CE markets only

Delivery scope standard equipment

Support	Delivery line	Water pump, 160 l/min 25 bar
Full support system	Deck delivery line in boom delivery line quality	Water tank 700 l
Support plates (4x), in 2 magazines	Delivery line (1-layer)	
Swivel support plates	End hose 3 m DN125	
Lighting	Core pump / Hopper	Safety
Control box lighting, LED	Agitator rotation automatic, dep. on pump direction	Connections for hydraulic emergency supply (boom)
Control points lighting, LED	Agitator safety switch off (RFID)	Guard rail on pedestal
Hopper lighting, LED	Central hopper lubrication, electric	Hand rail right side
Light for illumination pump and water box, LED	Hinged elbow with cleaning port	Mushroom button for horn, yellow
	Spectacle wear plate DURO 22	Towing eye
	Splash guard fixed	
	Steps left and right, zinc-plated	
	Wash-out port lid with locked slide pin	
Miscellaneous	Cleaning	Control systems
Container for sponge balls	Cleaning hose 8 m+2 m incl. bracket and nozzle	EOC 2.0 (Ergonic Output Control)
Delivery note box, plastic	Connection for water tank filling, both-sided	Ergonic 3
Operating instruction and spare parts manual (1x paper, 1x CD-ROM)	Water outlet on hopper, for small quantities (1/2")	Ergonic Graphic Display 9,7" incl. Ergonic diagnosis interface
Paintwork Putzmeister standard		Radio remote control with display
Side panel right/left foldable		
Tool kit		

See quotation for exact serial delivery scope.
Comprehensive range of options available on request.