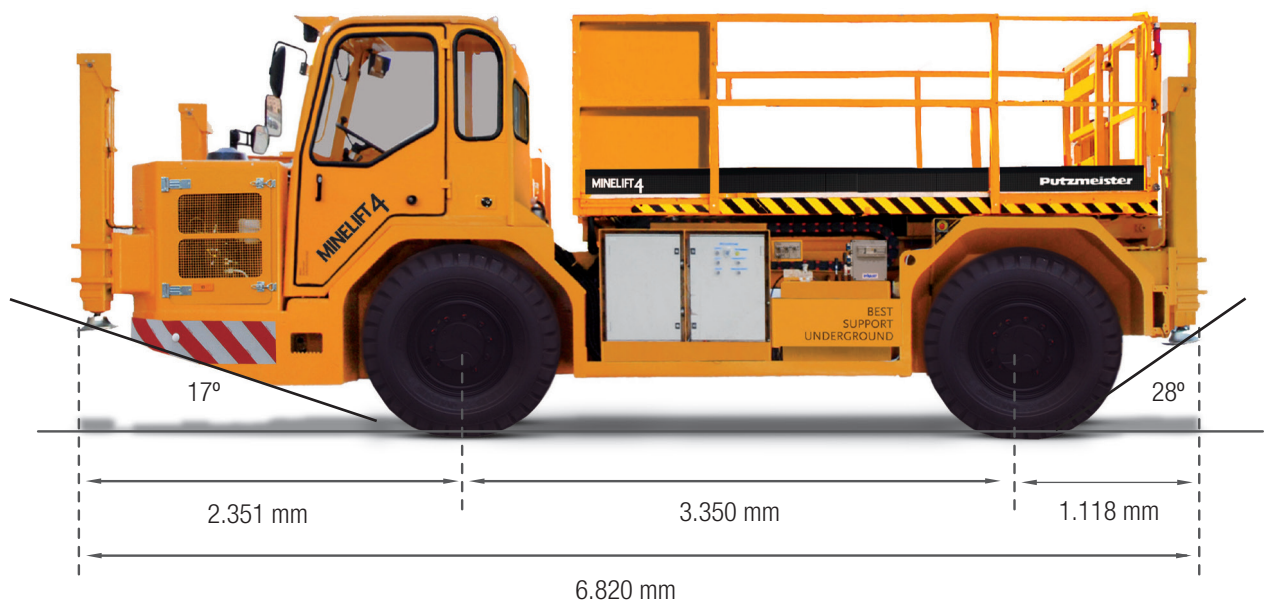


# Scissor lift platform for mining

# Minelift 4

Max. lifting height 4 m  
Lifting capacity 4 t



Note: This is a merely informative, non-binding document. Maximum theoretical values listed. Specifications are subject to change without prior notice. Photos and drawings are for illustrative purposes only. For available options, please consult the factory.

## Data sheet

Elevating platform		
Max. lifting height	mm	4.000
Lifting capacity	kg	4.000
Dimensions	mm	3.500 x 1.950
Longitudinal tilt	°	+/- 8
Control panel on platform and chassis		
Preinstallation of air/water distribution connection on right side of chassis, service on the platform		
Max. operational pressure	bar	10
Driving cabin		
Cabin FOPS/ROPS certified		
Glazing Front (with wipers and water tank ) and right side		

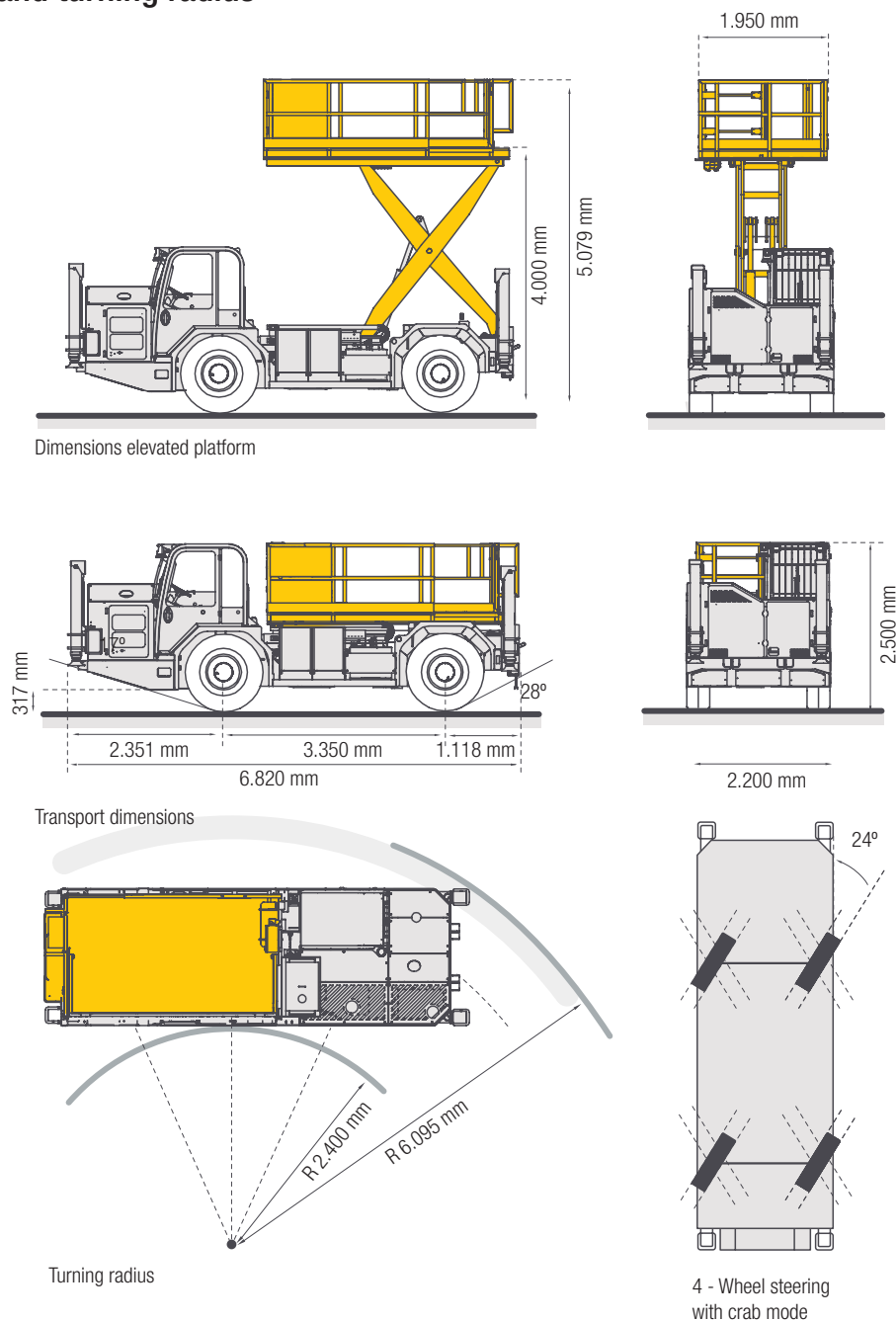
Driver seat Adjustable, mechanical and air suspension, seat belt
Lighting
Working lights on platform LED, 2 mobile lights
Driving lights LED, 2 front + 2 rear
Working lights LED, 4 front + 2 rear
Indicator and position lights LED, 2 front + 2 rear
Braking lights LED, 2 rear
Amber Rotative omnidirectional beacon (optional flashing)
Weight
12.000 kg

## Data sheet

Vehicle		
Diesel engine 6 cylinders		
Maximum power	kW/rpm	130 / 2.200
Cooling by water		
Engine emissions in accordance with EU-Stage III A / EPA Tier 3		
Catalyst DCL Int. MINE-X DC8		
Fuel tank	l	160
Maximum speed	km/h	20
Max. longitudinal gradient while driving	%	30
Max. transversal gradient while driving	%	10

Driving and steering Four-wheel drive and four-wheel steering (4WD / 4WS)
Transmission Hydrostatic progressive system with continuous variation (ICVD), no gears to change
Service brakes multi-disc in oil bath on both axles
Parking brakes (negative) internal SAHR discs on both axles
Heavy-duty directional planetary axles
Tyres Michelin MINE-X / Wheel rims 12.00-R20
Rear camera with night-vision
Automatic centralized greasing system

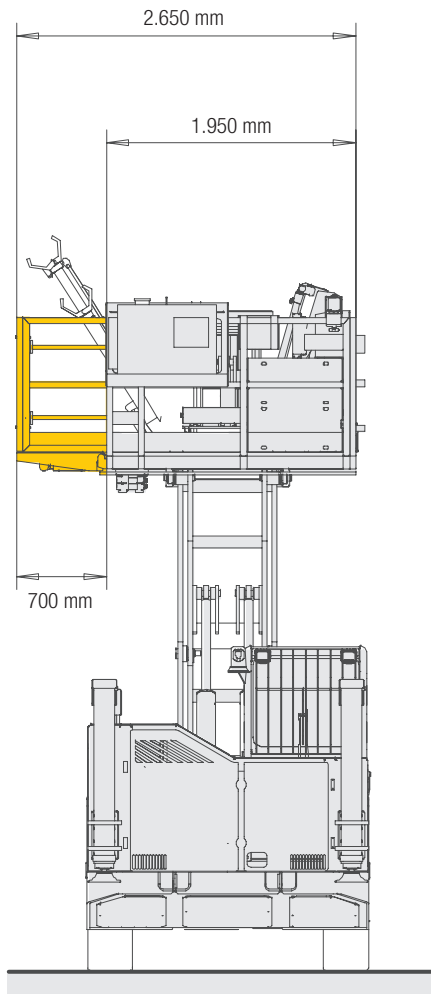
## Dimensions and turning radius



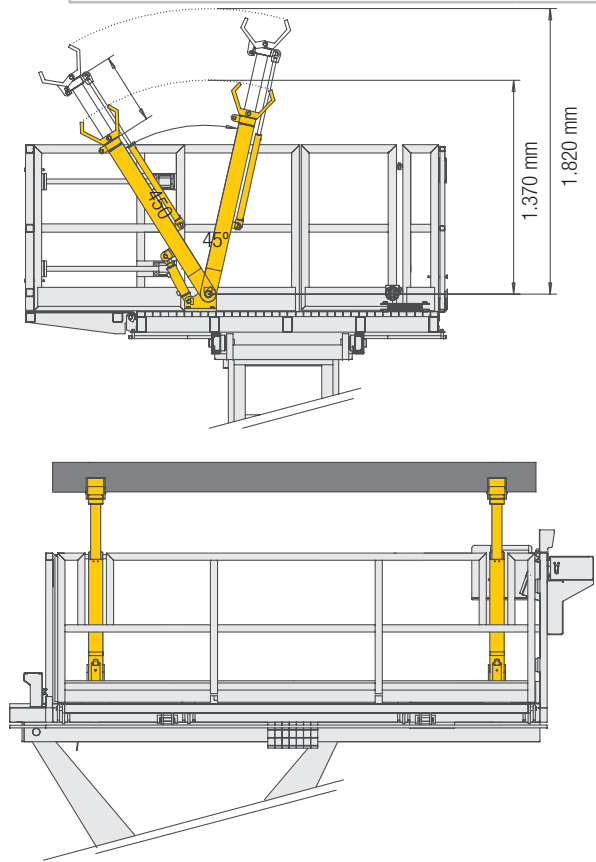
# Configuration for pipe installation

Extendable platform (drop wing)		
Max. lifting height	mm	4.000
Lifting capacity	kg	4.000
Additional width	mm	700
Max. load on drop-wing	kg	200
Dimensions	mm	3.500 x 2.650
Longitudinal tilt	°	+/- 8

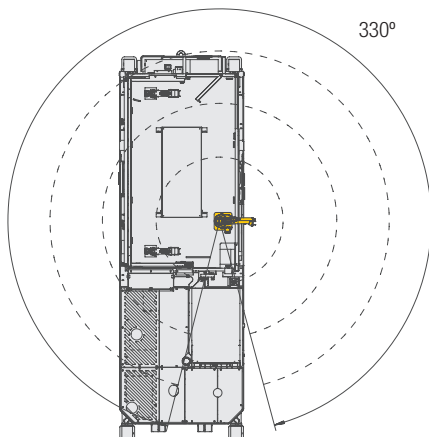
Pipe handling system		
Max. reach from platform	mm	1.820
Max. load capacity per arm	kg	300
Pipes 4 - 8" (100 - 200 mm)		
Crane		
Max. lifting capacity	kg	2.150
Max. lifting capacity at peak	kg	810
Reach	m	3,2
Proportional remote control		



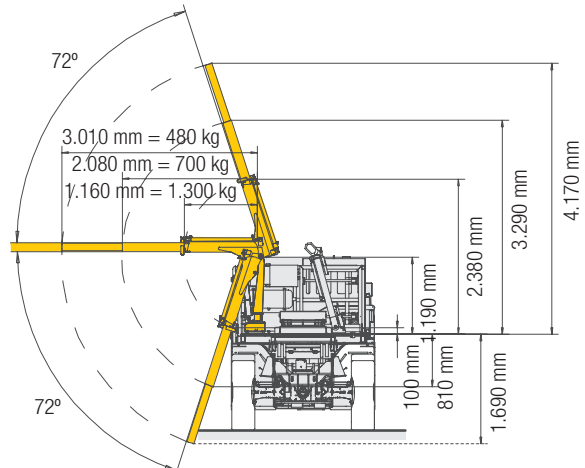
Extendable platform (drop wing)



Pipe handling system



Crane



## Optional equipment

### For installation of ventilation

AUXILIARY ELEVATING PLATFORM

Maximum load capacity 2.500 kg

Max. reach from platform 1.100 mm

Dimensions 1.600 x 700 mm

### For auxillary services

AIR COMPRESSOR

Power 13 kW

Max. working pressure 10 bar

Airflow 0,8 - 1,3 m<sup>3</sup>/min (28 - 46 cf/m)

ELECTRICAL GENERATOR

Power 5 kW

Tension 4 x 230 V + 2 x 400 V

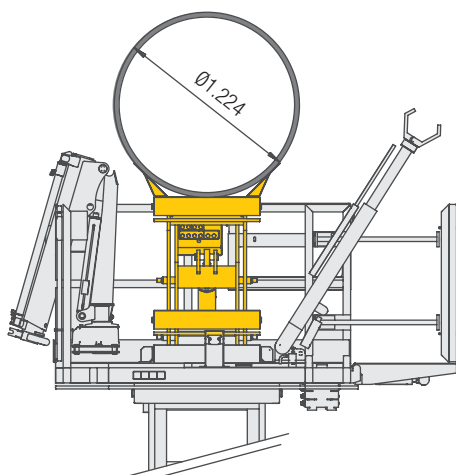
### For vehicle / cabin

Fire suppression system, automatic / manual operation

Closed driving cabin

Air conditioning and heating

Consult Putzmeister for special configurations



Auxiliary elevating platform For installation of ventilation

