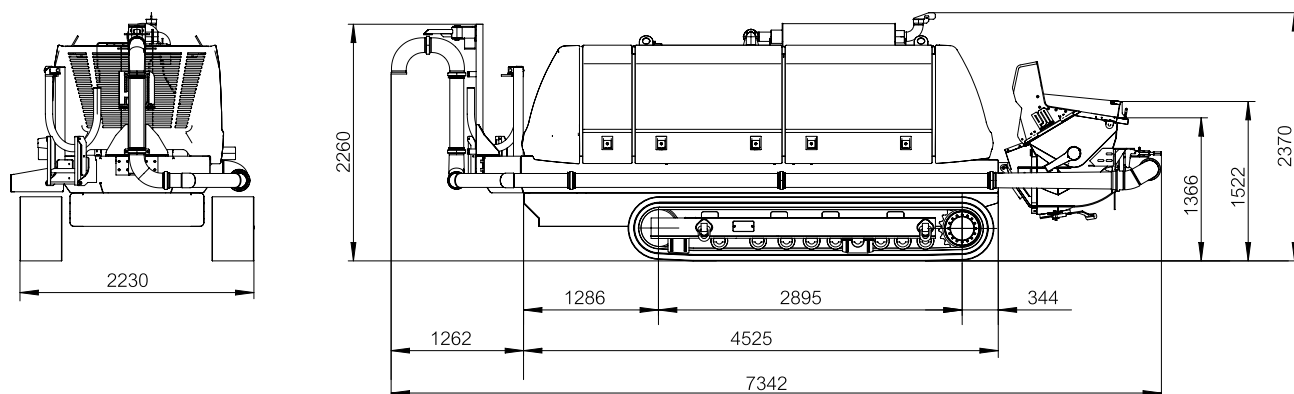


Concrete pump

Output up to 130 m³/h
 Delivery pressure up to 106 bar

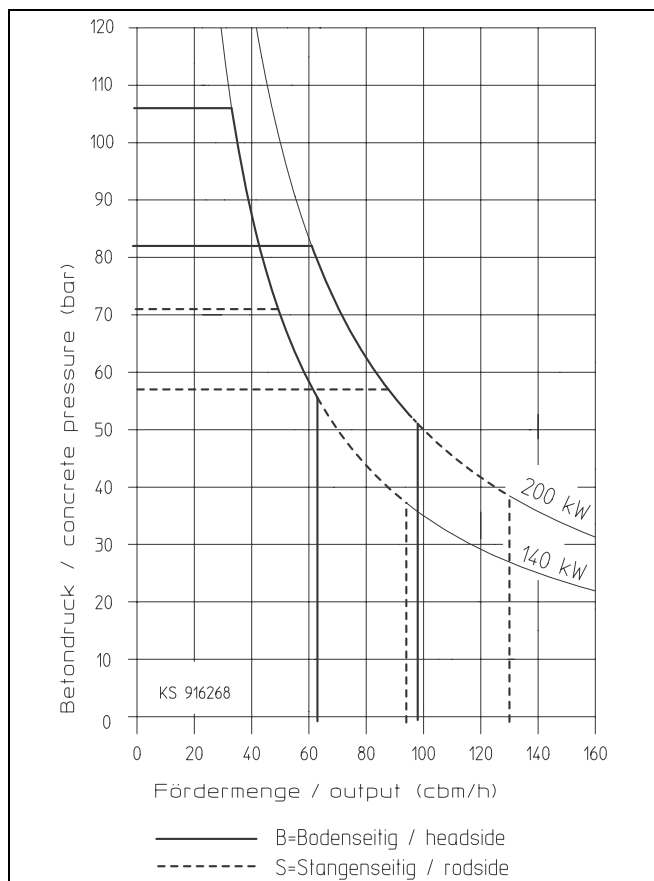
BSA 1409 D RF

BSA 1412 D RF



Note: Standard version
 Dimensions and weights (max. 12000 kg) depend on equipment.

Leistungsdiagramm



Technical data for concrete pump

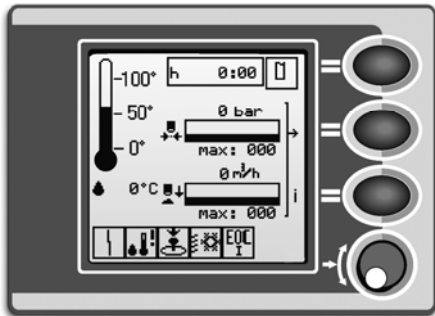
Model		BSA1409 D	BSA1412 D
Material number		102186.000	102167.000
Output	m ³ /h	94 / 63*	130 / 98*
Delivery pressure	bar	71 / 106*	57 / 82*
Delivery cylinder	∅ mm	200	250
Delivery cyl. stroke	mm	1400	
Strokes / minute		35 / 23*	33 / 24*
Engine power	kW	140	200
Hopper		RS 905A	RS 907L
Capacity	l	ca. 600	ca. 600
Filling height	m	1,3	1,3
Transfer tube		S 2015 D	S 2318 D
Control system		FFH 2-O	

* Values for hydraulic fluid being fed to piston-side.

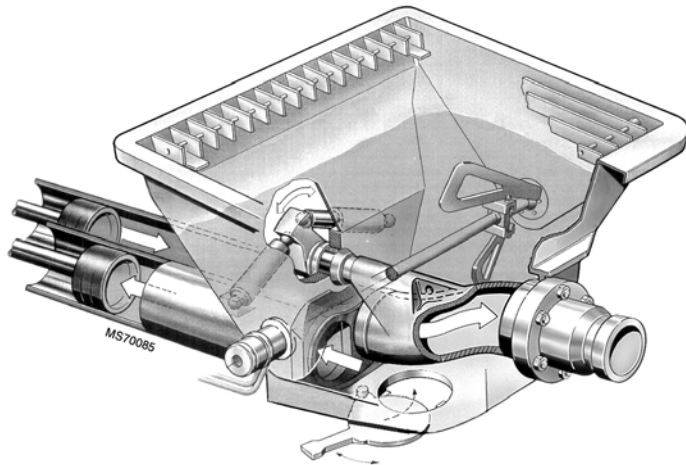
Technical data for chassis

Type	RF	
Speed	km/h	0 – 1,4
Soil pressure	kg/cm ²	

All data maximum theoretical



EGD - Ergonic Graphic Display



Hopper with transfer tube

Delivery scope

- Drive diesel, Deutz engine, 140 kW (BSA 1409 D RF)
- Drive diesel, Deutz engine, 200 kW (BSA 1412 D RF)
- Operating manuals cert. and spare part lists 2x
- Tool set incl. standard equipment
- Steel crawler chassis with rubber pads RF
- Cable remote control for crawler chassis 25 m
- Radio remote control for crawler
- Radio remote control for Pump
- Control console
- optical and acoustic warning device (Flashlight and horn)
- Central lubrication, electrical
- Rubber collar
- Watertank 700 l, integrated under hood
- Flushing water pump 50 l/min 20 bar
- Hinged elbow
- Rod side – piston side feed
- Cleaning accessories
- Storage trough
- Delivery line layed laterally
- Agitator safety cut-out
- Splash guard
- Standard accessories
- Coloring:
Cover MB 1227 chrome yellow / black
Frame RAL 7035 light-grey
Trailer RAL 7021 black-grey

Ergonic equipment

- Output regulation, electrical
- Delivery pressure regulation, electrical (EPS)
- Operating data for pump and engine shown in Ergonic Graphic Display (EGD)
- Automatic speed reduction with „Pump Stop“
- Pump flow meter

Optional extras

- Vibrator, electrical
- High pressure cleaner,

Please see quotation for exact delivery scope.